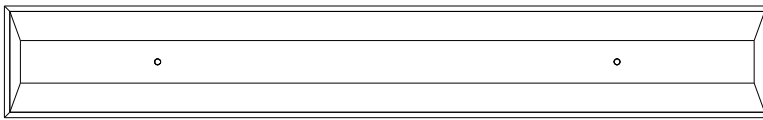
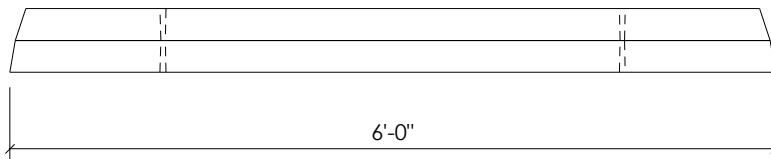


PARKING CURB

9 1/2" x 6" x 6'-0"

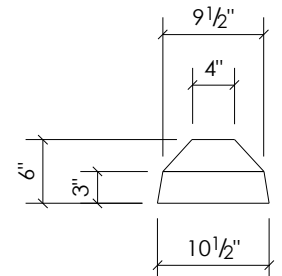


TOP VIEW



SIDE VIEW

- OPTIONS:
- As cast shop grey
 - Bolt down option available



END VIEW

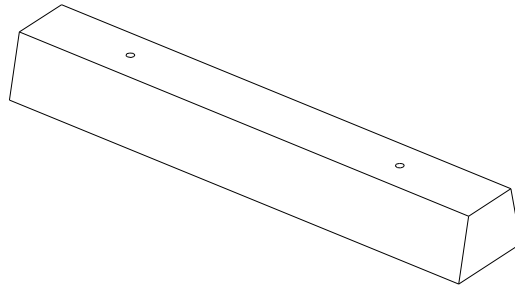
Complete unit shown weighs approx. 320 pounds.

BORCHERDT
concrete products

326 Hardscratch Road
RR#4 Box 5618
Yarmouth, Nova Scotia
B5A 4A8

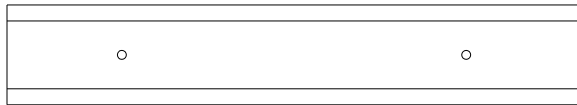
Ph: (902)742-7811
Fax: (902)742-7127
www.borcherdtconcrete.com
Email: info@borcherdtconcrete.com

Rev 0 May 2014



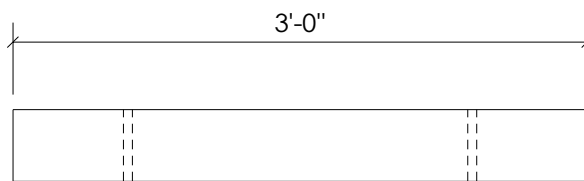
PARKING CURB

6¹/₄" x 4¹/₂" x 3'-0"

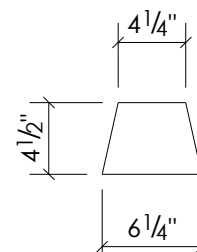


TOP VIEW

OPTIONS:
· As cast shop grey
· Bolt down option available



SIDE VIEW



END VIEW

Complete unit shown weighs approx. 80 pounds.



326 Hardscratch Road
RR#4 Box 5618
Yarmouth, Nova Scotia
B5A 4A8

Ph: (902)742-7811
Fax: (902)742-7127
www.borcherdtconcrete.com
Email: info@borcherdtconcrete.com

Rev 0 May 2014